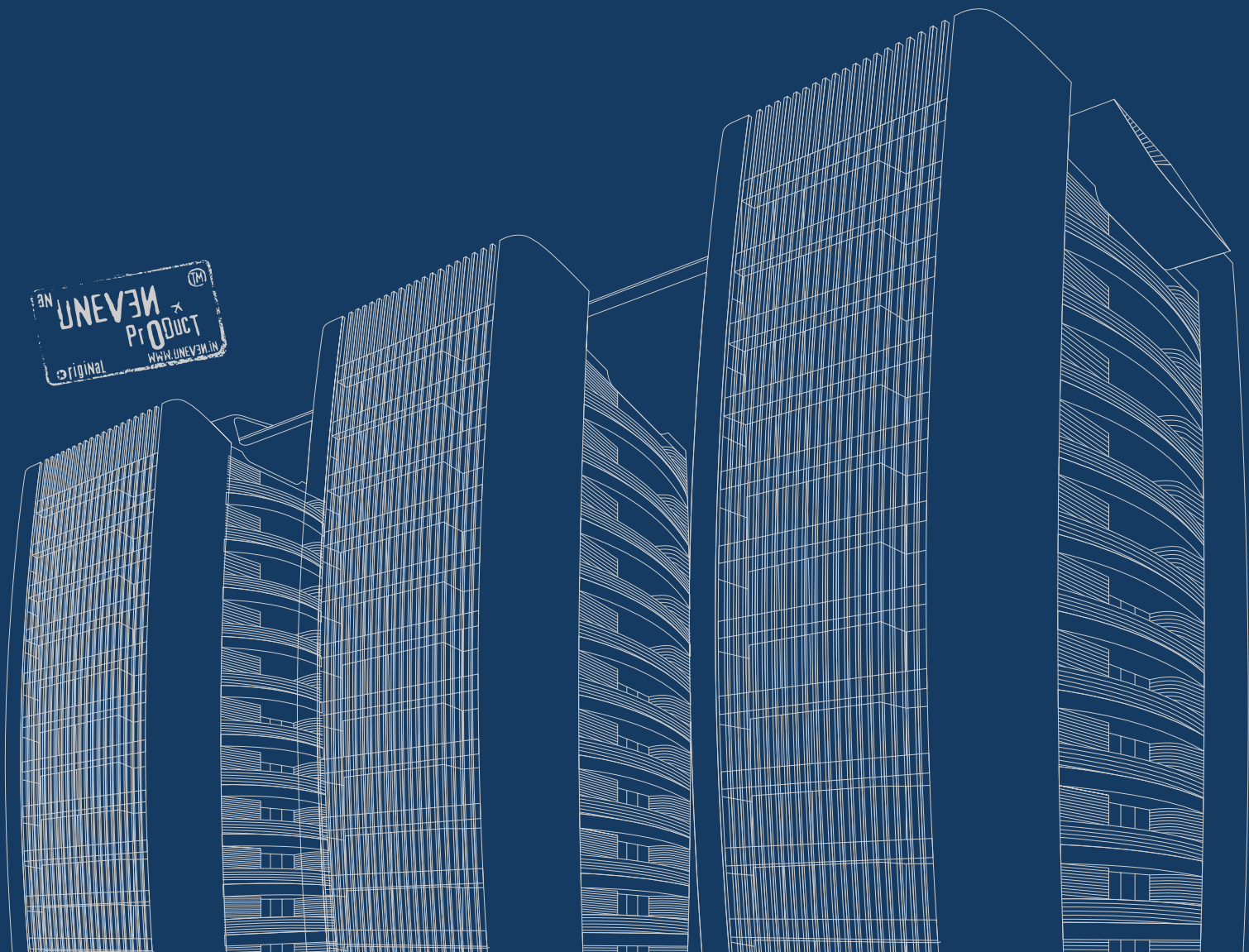




4B3HK Apartments with Elevated Lifestyle





IMAGINATION turned in to REALITY

A residence that connects you with nature, offering you Supreme Privacy and Security of a Palatial Villa. 33LE offers World Class Luxury with beautifully Landscaped Outdoors and Delightful Amenities to Elevate your Lifestyle, covering only 12,000 sq.ft construction space out of its 58,900 sq.ft of Vast Project Area, ensuring that each flat is illuminated and ventilated throughout the day by natural light and air from all sides.

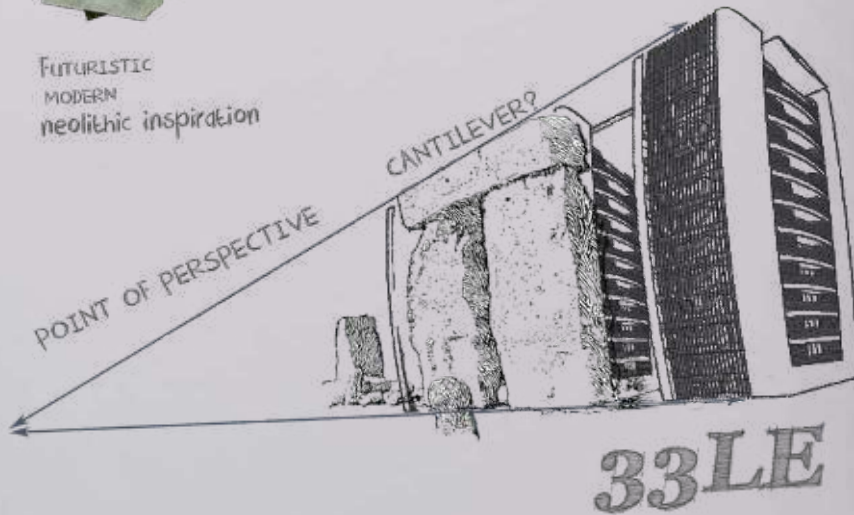
4B3HK APARTMENTS WITH ELEVATED LIFESTYLE





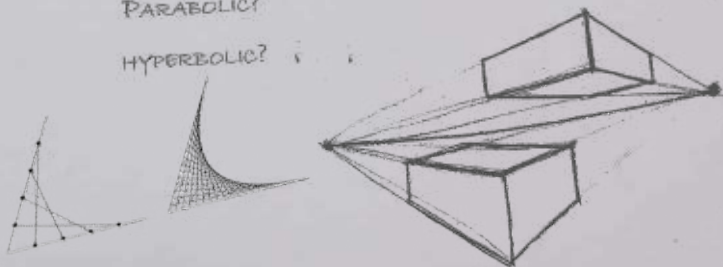
STONEHENGE
southern England

FUTURISTIC
MODERN
neolithic inspiration



PARABOLIC?

HYPERBOLIC?



The Structure of 33LE is inspired from the Neolithic monument near Salisbury, Southern England known as Stonehenge. It was built between 2600-2400 BC and holds the most architecturally sophisticated prehistoric stone circle in the world. The naturally Grey-White surface inspired the texture of the outer facade of 33LE towers.

These 'Megaliths' or massive stone blocks are made up of 'sarsen' stones and 'bluestones' which were erected around 3000BC and tower 30 feet (9 meters) above the earth and weigh an estimated 25 tons each!

Historians state that Stonehenge with its 'Megaliths' as reference points for planetary movement, may have served as a Solar Calendar. They have been mindfully erected in a circular pattern, equally spaced out at intervals which projected a picture in our minds to design 33LE to promote ample air circulation and plentiful natural light.

Archaeologists say that the site may have served as either a ceremonial site or sacred ritual meeting place, much like 33LE at which we aspired to make homes where people can come together yet have their own spacious private space. Each flat was mindfully designed with separate accommodation and entry for your housekeeping staff.

The Sarsen Stone, characteristically native to Southern England, is mostly liquid quartz with sand stone. Metaphysically speaking, it had been believed to be a stone of Timing and Endurance, having healing abilities. The Sarsen Stone was believed to enlighten seekers with the lessons of Time and Timing, and help them appreciate the beauty of the simple things that might normally escape their attention. Similarly, each and every square inch of 33LE, be it your Home, the beautiful landscaped outdoors or the wonderful amenities has been designed for experiencing the best out of your time with family and friends. Even the Infinity Pool on the terrace with a 360degree view of the city's horizon is a rejuvenating experience much similar to healing your inner self.

It is a mystery to marvel how olden architects may have managed to transport these massive stones from as far as 140 miles and erected them because the site in and around Stonehenge is devoid of either stones or even trees! Stonehenge, since times immemorial has been an attraction point of tourists from across the globe for witnessing the sheer marvel of these large Megaliths erected with such accuracy. Because of the inspiring parabolic structure of 33LE, the magnanimous task of placing a large infinity pool and the futuristic looking cantilever over a height of 11 stories, even 33LE has been appreciated and rewarded for being an architectural marvel and still continues to receive fame and fortune as the word of its completion spreads.



A multinational conglomerate with annual turnover of over 1.25 Billion dollars and presence across 90+ countries, RR Global has moulded its success on innovation for the present and the future. Since the foundation of the brand, its architects opted that innovation is the key to success of every product in the brand. The Strength has always been to focus on core values of trust, innovation and quality.

Our flagship brand - RR Kabel, is a name which is admired worldwide with existence over 80 countries and 7 continents across the globe. RR Global takes honour in establishing 9 companies and global offices, primarily in the U.A.E and Bangladesh. In 1999, RR Kabel became the first Indian company to introduce Unilay Core Technology. In their endeavour to set international benchmarks, RR Kabel was always ahead of time in embracing the ever-progressing technological upgrades of the world, having received 19 international accreditations along with being the first in India to have BASEC (U.K.), UL (U.S.A.), VDE (Germany), among others for its wide range of cables including ISO 50001 and ISO 14001. They have made technological upgradation an everlasting practice spreading their manufacturing base to other countries well. As part of giving back to the Industry, RR Kabel has supported and sponsored Real estate industry development bodies like CREDAI during their events for years, gathering developers across the globe and giving them a platform to showcase their work, thus elevating the industry to what it is today.

RR Global India focuses on progressive technology and research to enhance efficiency, trust and smooth conduction of electricity ensuring secure environments everywhere in the construction industry - offices, commercial spaces, industrial plants, and residences.

Real Estate has been an ever progressing industry with contractors and builders fulfilling the requirements of the market. Kabel Buildcon was born as a Progressive Developer, providing progressive addresses for those who prefer living in a progressive state of mind. A Developer's core value is to develop the entire nation and grow along with its growth. With an eye for aesthetic detail, focus on quality and great craftsmanship Kabel Buildcon has grown to provide progressive construction services for numerous residential, commercial and industrial projects along with making opulent homes at value for money prices with transparency, trust, meticulous planning and a humble heart to provide an upgraded lifestyle for all its clients.

“Leading by Example”

Our Founder,
Mr. Mahesh Kabra



When your work is driven by elevating the lifestyle of souls around you, your Work become your Purpose, setting Landmarks becomes your Goal and Transforming Skylines the motto of your company.

The foundation of Kabel Buildcon – ever progressing and growing, was laid down by Mr. Mahesh Kabra. Seen walking around his construction sites sharing his knowledge with fellow team mates and ensuring every phase of construction is immaculately executed, he is a man of vision and virtues, who has built himself grassroots up juggling products and services in the construction industry. His becoming prodigious in the real estate industry traces back to family roots in the Cables and Wires Industry.

He started out his career in 1998, when RR Kabel was set in motion and the foundation of Wires and Cables manufacturing was laid down, having sourced the latest technology and equipment from Switzerland, Germany and France which was a first to India. A year later, he was spearheading Sales and Marketing of RR Kabel, charting and spreading pan-India. This gave him opportunities to understand and fulfil the demands of the end users of Wires and Cables – Architects, Interior Designers and Developers. Besides Sales, he also led RR Kabel teams in International Exhibitions and Industrial visits abroad for machinery purchase, which further strengthened his belief in using futuristic technology and progressive construction practices which are at par with international standards. Another horizon-expanding opportunity was being a part of establishing RR Kabel's high end manufacturing unit at Waghodia, Gujarat which within a decade culminated into 1.33 Million square feet of constructed space which now accommodates the factory building, utilities, admin building, residential complex with Temple, RCC roads, storm water drainage systems, paved roads and a rooftop solar farm which generates 1MW of power!

Having invested in a successful career catering to demands of Real Estate Industry and sculpted by deep rooted beliefs of upgrading lives with Inspired Thinking, his gradual ascension to laying the foundations of Kabel Buildcon and making its first project a landmark in India, was evident.

Why Kabel Buildcon?

From the desk of our Founder.



A VENTURE BY: **RR** GLOBAL

When I look at the ever-progressing world we live in, I am inspired by how fast India is developing complementing its international peers. We are at the peak of global expansion and today's Indian is a learned individual of aspirations, dreams and goals in Life. With trends in social media and exposure to international travel, people are now aware of what a truly global aesthetic feels like. They are aspiring for upgraded lifestyles suited to their respective budgets in all fields of life. Members of families are becoming more self-aware and independent, and a desire for bigger and better homes with amazing amenities has surfaced.

Kabel Buildcon recognised the demand of a meticulously organised way of business, using innovative construction practices. The market desired homes that fulfilled the demand of space and privacy, along with quality of international standards at value for money prices whilst still keeping true to Indian roots. Our world is open for us to seek inspiration from our values and guidance from our Imagination. The grounding motivation to create our 1st project as an architectural marvel came from a lineage of delivering products & services that provide superior technology, performance and enhanced value to consumers upgrading their lifestyles.

Investing into a property and building your dream home which fosters future and present generations is one of the prime desires of man. A plethora of emotions, hopes and aspirations are glued to the word 'Home'. This has been my ever-inspiring emotion of helping people build this desire into fruition, which starts with giving them more value addition than they seek. Kabel Buildcon feels subtle pride at the completion of 33LE and the amazing response that it gathered from people. With the same gratitude towards our consumers, Kabel Buildcon shall further build more fulfilling homes all over the nation along with doing turnkey projects, commercial spaces and services that further enrich our industry.

Let's shape the Architecture of the dreams of people around us and keep providing progressive spaces for progressive people.

- Mahesh Kabra



33LE has been conceptualised and materialised
by the most adept minds in the real estate industry.

With thoughts of meticulous perfection & longevity,
it is empowered by technical expertise of :

ARCHITECT

Uneven

STRUCTURAL CONSULTANT

Aashutosh Desai

QUALITY CONTROL

Technocrat Engineering Lab
& Vishwakarma Consultants

MEP CONSULTANTS

Sheth Rechno Consultants Pvt Ltd

GREEN BUILDING CONSULTANT

Ankoo Sanghvi

CONSTRUCTION PARTNERS

NCCCL

3D ILLUSTRATIONS

Param Interactive



33LE is a Landmark Project of Gujarat by Kabel Buildcon Solutions Pvt Ltd, a company built grassroots up with a divine purpose of bringing a WOWsome life to all by creating progressive and value-for-money homes.

33LE is Kabel Buildcon's flagship project, which has become a trendsetter in terms of introducing many a '1st' for the Real Estate industry, inspiring them to reach new milestones and expanding new horizons with its Futuristic Design, Progressive Construction Practices and Facilities that evoke a feeling of Opulence.

RERA Registration Number:
PR/GJ/VADODARA/VADODARA/Others/RAA00093/EX2/030120



SEE

LOVED & EVOLVED

Every architectural marvel known to man has been first built in the Imagination of Great Minds and then meticulously executed by skilled hands. This calls for the choicest of construction material and innovative practices that help realise this vision to reality.

Switches and
Switchgear

Schneider
Electric

Wood Flooring

Mikasa
Real Wood Resin

Water Pipes and
Drainage Accessories

ASTRAL
PIPES

sanitary fixtures

hansgrohe

Flush Tanks and Cisterns

viega

Parking Systems

RR PARKON

Sewage Treatment Plant

Flow Dynamics India

Swimming Pool Equipment

AQUA
INDUSTRIAL GROUP

Sanitaryware

TOTO

Doors and
Windows

domal
Bring with elegance

Flooring

MIRAGE
Porcelain Design & Craftsmanship

Wires and Cables

RR KÄBEL

Wooden Deck

HKS
1835
Germany

Formwork and
Scaffolding Solutions

PERI

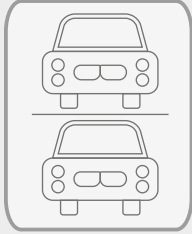
Elevator Systems

thyssenkrupp

Water Pressure Pumps

GRUNDFOS

Innovative Construction Practices



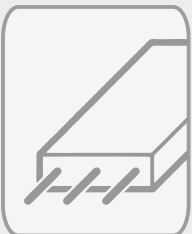
Each Flat has facilities to invest in a mechanised smart parking system in the basement for increased functionality and progressive living. This car parking system enhances a smart and secure way of parking while promoting better allocation of parking space for all.



33LE is Pre-Rated Green Building Certified Project by IGBC in 'Gold' Category for its top-of-the-line Eco-Friendly planning with Onsite Rainwater Harvesting, Sewage Treatment Plant, Water Softening Plant and Pressure Boosting Pump and every other meticulous practice that ensures progressive utilization of energy and water resources. Our Sewage Treatment Plant is empowered with an added Microfilter that enhances quality of treated water making it colourless and odourless.



A Multi-Tier security system with Hi-tech Electronic and Human Surveillance system, CCTV systems, smart fire-safety regulations compliancy, provision for integrated door-phones complete with access control which is customised for home-owners to ensure that you and your loved ones feel secure and at peace in your property.



The structure of 33LE has been built using only futuristic construction practices for higher durability and minimised maintenance, which was a 'first' in Vadodara like using Post-Tensioning Pre-Stressing and lightweight 'Peri-Formwork' systems from Germany, making 33LE one of the most structurally-secure and durable homes one can live in.

Achievements



**GEEVEES 2022
GOLD WINNER AWARD**
by Jury in Multi Residential Segment
awarded for 33LE to Uneven,
Architect & Interior Designer



GOLD CERTIFICATE
by the Indian Green Building
Council (IGBC) has been
awarded to 33LE



BEST COMPLETED PROJECT
Awarded to NCCCL,
33LE's Construction Partner in
CIDC Vishkarma Awards 12th Edition



**GEEVEES 2022
PEOPLE'S CHOICE AWARD**
in Residential Multi-Unit Segment
awarded for 33LE to Uneven,
Architect & Interior Designer



**CNBC BAZAR
REAL ESTATE
AWARD**
Best Residential Project
Luxury Segment



Best Residential Project
Luxury Segment award
being received by
promoter of Kabel
Buildcon Smt. Vidhi Kabra
by Hon'ble CM of Gujarat
in Gujarat Real Estate
Awards organised by
CNBC Awaz









‘4B3HK’- Open Doors To Your Heavenly Abode

Each Floor is a blissful 'smartment' with one 4BHK flat on the entire floor. As you enter into your floor from the Lift Lobby, you open gates to your own personal Divine Abode for you and your Loved Ones.



The sumptuous and sizeable apartments consist of a tailor-made combination of 4 bedrooms, 3 Halls and Kitchen complete with provision of splash pool and separate entry for your housekeeping staff!





Luxuriant Green Outdoors

The Landscape has been lovingly designed as One Living Organism. Ledges, meticulously polished stone benches, lush green patches and sun kissed canopies become grounds of bonding over evening-tea and morning walks.





Lifestyle Amenities

Relax, Rejuvenate and Celebrate. From a relaxing day after a Spa session, to a memorable day with friends and family in celebrations - we at 33LE understand that your Life is made up of moments that you can savour.



Thoughtfully planned for you to cherish your memories:

- Banquet(s)
- Therapy Room
- Steam Room
- Single Screen Theatre
- Luxurious Guest Rooms on request
- Pantry for your Party Catering on request
- Separate restroom for Staff / Drivers



Fitness Amenities

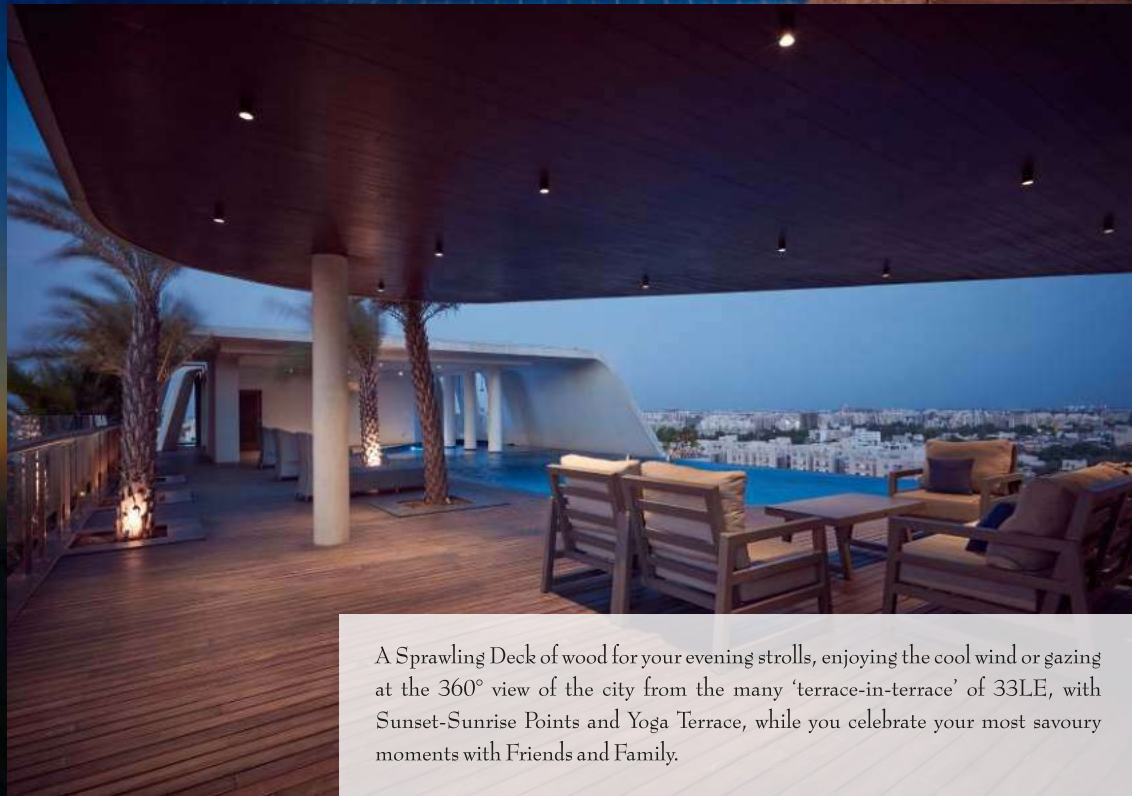
Train your Body & Mind everyday with the choicest of Indoor/Outdoor Sport Activities that we have spread across for you in the three towers. Be it exercising your muscles in the gym and increasing your agility in the squash court, we have it all just for your fitness.





Sky-Deck With 360° View

Your dream of a high-rise sky-deck gets fulfilled here with 33LE's terrace pool deck, which connects the three towers and offers a beautiful 360° horizon view of Vadodara. Enjoy a pleasant evening basking on the sun deck – adorned with abundance of green shrubs and palm trees. Each side of the deck also has steam, a shower, and restrooms for men and women.



A Sprawling Deck of wood for your evening strolls, enjoying the cool wind or gazing at the 360° view of the city from the many 'terrace-in-terrace' of 33LE, with Sunset-Sunrise Points and Yoga Terrace, while you celebrate your most savoury moments with Friends and Family.



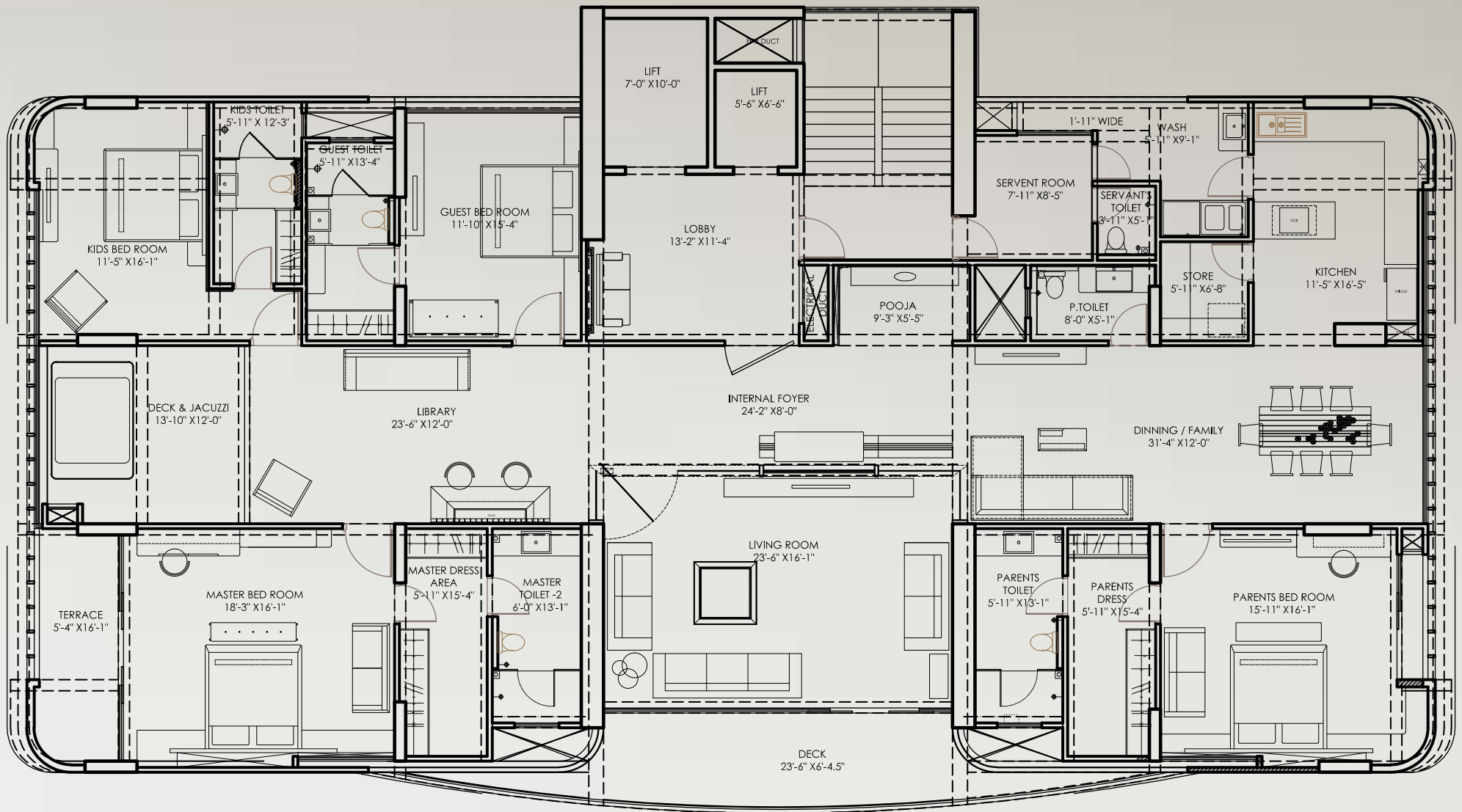
Massive Rooftop Infinity Pool

The grand infinity pool atop the terrace deck at 33LE is the crowning jewel in our project. It offers a rich, rejuvenating experience as you complete a lap in Infinity Pool on Terrace, spanning an Olympic length! Soak in the affluent blue waters and relax after a well-earned day, as you enjoy the sky-high 360° view of Vadodara.



Typical Apartment
3800 sq.ft to 4500 sq.ft

this is an indicative plan, actual plan per floor may differ.



Typical Floor Plan

The Amenities Map

- | | |
|--------------------------------|-----------------------|
| a indoor games | g mini theatre |
| b squash court | h guest rooms |
| c estate manager office | i pantry |
| d lounge | j banquet |
| e gym | |
| f spa room | |

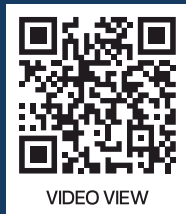
this is an indicative plan, actual plan per floor may differ.



Ground Floor Plan



LOCATE US



VIDEO VIEW

f/ @ kabelbuildcon

PROJECT BY



HEAD OFFICE:
KABEL BUILDCON,
GROUND FLOOR, ALEMBIC BUSINESS PARK (WEST),
BHAILAL AMIN MARG, GORWA, VADODARA-390003

+ 91 81530 36333

sales@kabelbuildcon.com

www.kabelbuildcon.com

A VENTURE BY: **RR** GLOBAL

RERA REG.NO:PR/GJ/VADODARA/VADODARA/Others/RAA00093/EX2/030120
www.gujrera.gujarat.gov.in