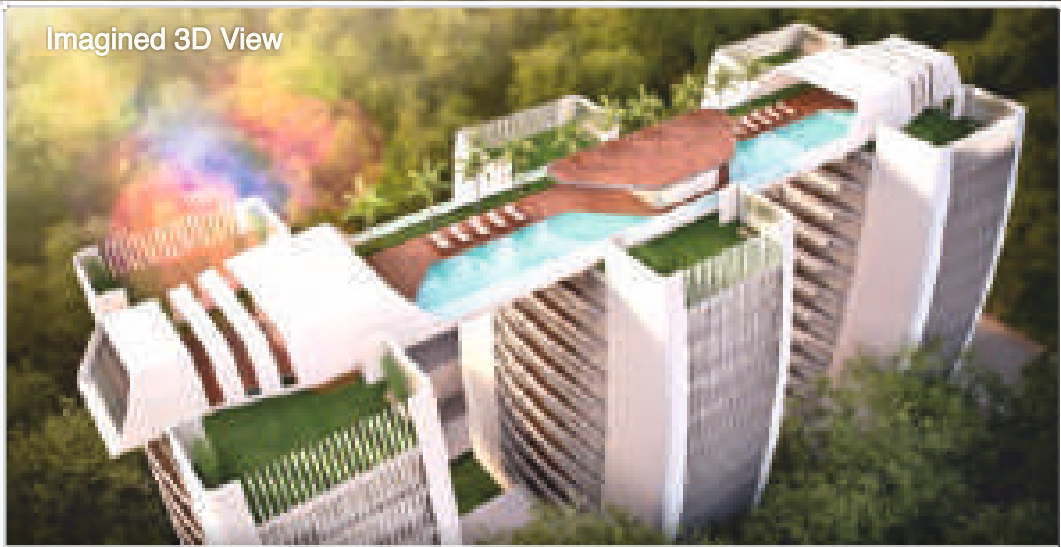


Imagined 3D View



IMAGINATION  
*becomes* REALITY *and here it is !!*



Image of Completed Project



**KABEL BUILDCON**

Creating Progressive Addresses  
for those who prefer living in a  
Progressive State of Mind,  
Worldwide !!



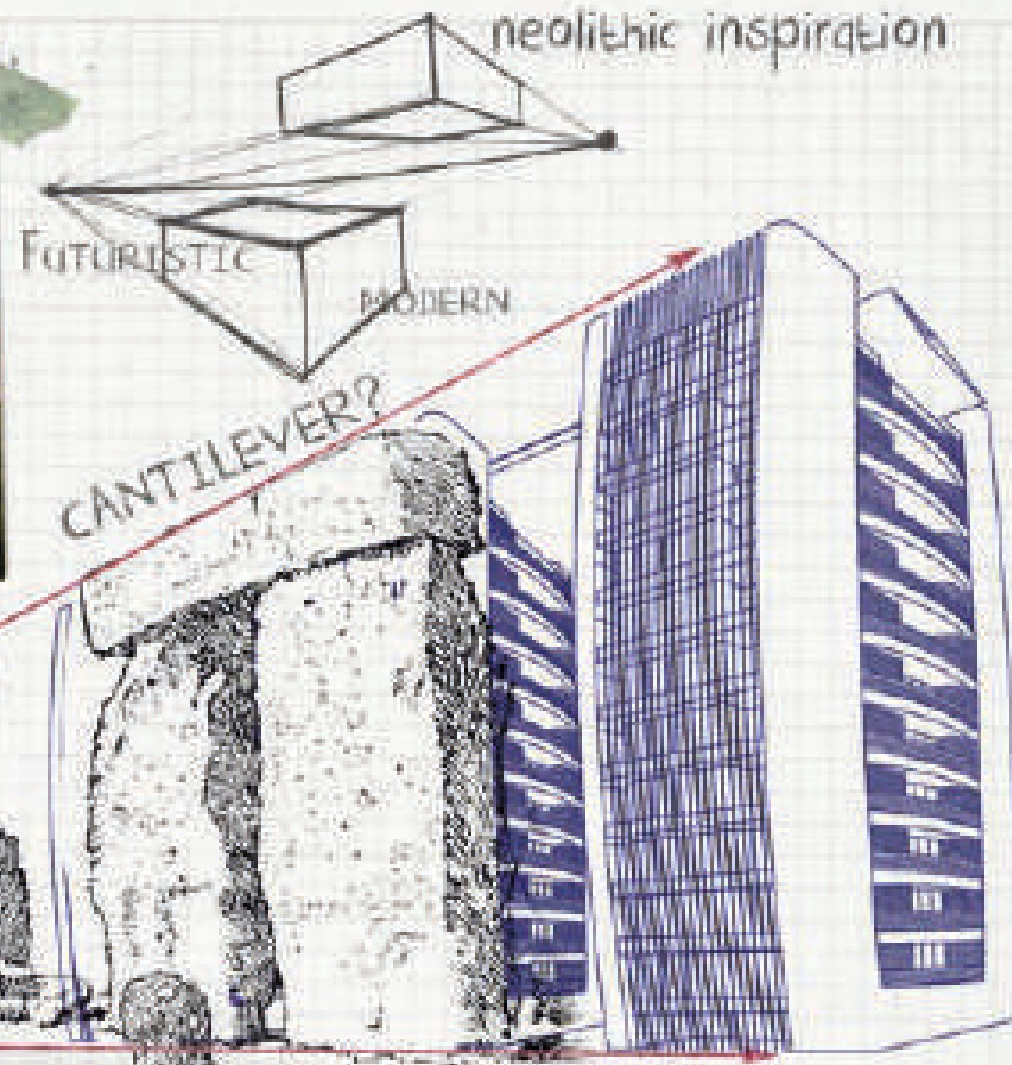
Loved and Evolved Homes  
for Loved & Evolved Families



# STONEHENGE

southern England

POINT OF PERSPECTIVE



33LE

TOOK 1,500 YEARS TO ERECT

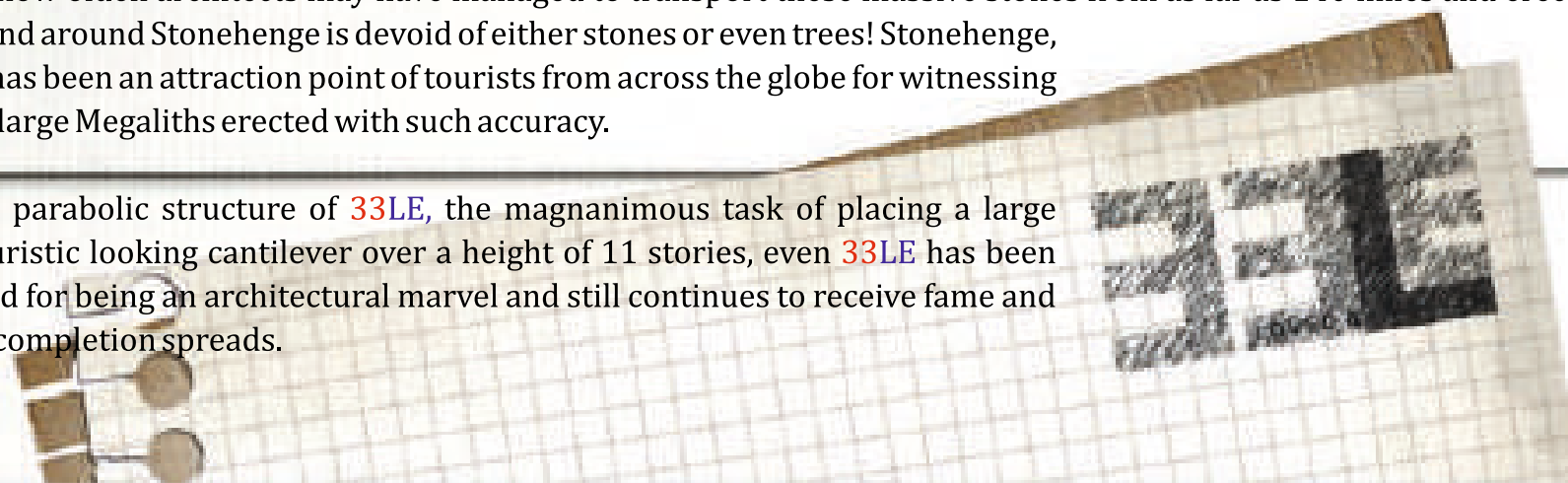
The Structure of 33LE is inspired from the Neolithic monument near Salisbury, Southern England known as Stonehenge. It was built between 2600-2400 BC and holds the most architecturally sophisticated prehistoric stone circle in the world. These 'Megaliths' or massive stone blocks are made up of 'sarsen' stones and 'bluestones' which were erected around 3000BC and tower 30 feet (9 meters) above the earth and weigh an estimated 25 tons each! The naturally Grey-White surface inspired the texture of the outer façade of 33LE towers. Historians state that Stonehenge with its 'Megaliths' as reference points for planetary movement, may have served as a Solar Calendar. They have been mindfully erected in a circular pattern, equally spaced out at intervals which projected a picture in our minds to design 33LE to promote ample air circulation and plentiful natural light.

Archaeologists say that the site may have served as either a ceremonial site or sacred ritual meeting place, much like 33LE at which we aspired to make homes where people can come together yet have their own spacious private space. Each flat was mindfully designed with separate accommodation and entry for your housekeeping staff.

The Sarsen Stone, characteristically native to Southern England, is mostly liquid quartz with sand stone. Metaphysically speaking, it had been believed to be a stone of 'timing' and 'endurance', having healing abilities. The Sarsen Stone was believed to enlighten seekers with the lessons of Time and Life, and help them appreciate the beauty of the simple things that might normally escape their attention. Similarly, each and every square inch of 33LE, be it your Home, the beautiful landscaped outdoors or the wonderful amenities have been designed for experiencing the best out of your time with family and friends. Even the Infinity Pool on the terrace with a 360degree view of the city's horizon is a rejuvenating experience much similar to healing your inner self.

It is a mystery to marvel how olden architects may have managed to transport these massive stones from as far as 140 miles and erected them because the site in and around Stonehenge is devoid of either stones or even trees! Stonehenge, since times immemorial has been an attraction point of tourists from across the globe for witnessing the sheer marvel of these large Megaliths erected with such accuracy.

Because of the inspiring parabolic structure of 33LE, the magnanimous task of placing a large infinity pool and the futuristic looking cantilever over a height of 11 stories, even 33LE has been appreciated and rewarded for being an architectural marvel and still continues to receive fame and fortune as the word of its completion spreads.





RR Global, an 800 million USD corporation has moulded its success on innovation for the present and the future. Since the foundation of the brand, its architects opted that innovation is the key to success of every product in the brand. The Strength has always been to focus on core values of trust, innovation and quality.

Our flagship brand - RR Kabel, is a name which is admired worldwide with existence over 80 countries and 7 continents across the globe. RR Global takes honour in establishing 9 companies and global offices, primarily in the U.A.E and Bangladesh. In 1999, RR Kabel became the first Indian company to introduce Unilay Core Technology. In their endeavour to set international benchmarks, RR Kabel was always ahead of time in embracing the ever-progressing technological upgrades of the world, having received 19 international accreditations along with being the first in India to have BASEC (U.K.), UL (U.S.A.), VDE (Germany), among others for its wide range of cables including ISO 50001 and ISO 14001. They have made technological upgradation an everlasting practice spreading their manufacturing base to other countries well. As part of giving back to the Industry, RR Kabel has supported and sponsored Real estate industry development bodies like CREDAI during their events for years, gathering developers across the globe and giving them a platform to showcase their work, thus elevating the industry to what it is today.

RR Global India focuses on progressive technology and research to enhance efficiency, trust and smooth conduction of electricity ensuring secure environments everywhere in the construction industry - offices, commercial spaces, industrial plants, and residences.

Real Estate has been an ever progressing industry with contractors and builders fulfilling the requirements of the market. Kabel Buildcon was born as a Progressive Developer, providing progressive addresses for those who prefer living in a progressive state of mind. A Developer's core value is to develop the entire nation and grow along with its growth. With an eye for aesthetic detail, focus on quality and great craftsmanship Kabel Buildcon has grown to provide progressive construction services for numerous residential, commercial and industrial projects along with making opulent homes at value for money prices with transparency, trust, meticulous planning and a humble heart to provide an upgraded lifestyle for all its clients.

## “Leading by Example”

### Our Founder **Mahesh Kabra**

*When your work is driven by elevating the lifestyle of souls around you, your Work become your Purpose, setting Landmarks becomes your Goal and Transforming Skylines the motto of your company.*

*The foundation of Kabel Buildcon – ever progressing and growing, was laid down by Mr. Mahesh Kabra. Seen walking around his construction sites sharing his knowledge with fellow team mates and ensuring every phase of construction is immaculately executed, he is a man of vision and virtues, who has built himself grassroots up juggling products and services in the construction industry. His becoming prodigious in the real estate industry traces back to family roots in the Cables and Wires Industry.*

*He started out his career in 1998, when RR Kabel was set in motion and the foundation of Wires and Cables manufacturing was laid down, having sourced the latest technology and equipment from Switzerland, Germany and France which was a first to India. A year later, he was spearheading Sales and Marketing of RR Kabel, charting and spreading pan-India. This gave him opportunities to understand and fulfil the demands of the end users of Wires and Cables – Architects, Interior Designers and Developers. Besides Sales, he also led RR Kabel teams in International Exhibitions and Industrial visits abroad for machinery purchase, which further strengthened his belief in using futuristic technology and progressive construction practices which are at par with international standards. Another horizon-expanding opportunity was being a part of establishing RR Kabel's high end manufacturing unit at Waghodia, Gujarat which within a decade culminated into 1.33 Million square feet of constructed space which now accommodates the factory building, utilities, admin building, residential complex with Temple, RCC roads, storm water drainage systems, paved roads and a rooftop solar farm which generates 1MW of power!*

*Having invested in a successful career catering to demands of Real Estate Industry and sculpted by deep rooted beliefs of upgrading lives with Inspired Thinking, his gradual ascension to laying the foundations of Kabel Buildcon and making its first project a landmark in India, was evident.*



## Why Kabel Buildcon?

From the desk of our Founder.

*When I look at the ever-progressing world we live in, I am inspired by how fast India is developing complementing its international peers. We are at the peak of global expansion and today's Indian is a learned individual of aspirations, dreams and goals in Life. With trends in social media and exposure to international travel, people are now aware of what a truly global aesthetic feels like. They are aspiring for upgraded lifestyles suited to their respective budgets in all fields of life. Members of families are becoming more self-aware and independent, and a desire for bigger and better homes with amazing amenities has surfaced.*

*Kabel Buildcon recognised the demand of a meticulously organised way of business, using innovative construction practices. The market desired homes that fulfilled the demand of space and privacy, along with quality of international standards at value for money prices whilst still keeping true to Indian roots.*

*Our world is open for us to seek inspiration from our values and guidance from our Imagination. The grounding motivation to create our 1st project as an architectural marvel came from a lineage of delivering products & services that provide superior technology, performance and enhanced value to consumers upgrading their lifestyles.*

*Investing into a property and building your dream home which fosters future and present generations is one of the prime desires of man. A plethora of emotions, hopes and aspirations are glued to the word 'Home'. This has been my ever-inspiring emotion of helping people build this desire into fruition, which starts with giving them more value addition than they seek. Kabel Buildcon feels subtle pride at the completion of 33LE and the amazing response that it gathered from people. With the same gratitude towards our consumers, Kabel Buildcon shall further build more fulfilling homes all over the nation along with doing turnkey projects, commercial spaces and services that further enrich our industry.*

*Let's shape the Architecture of the dreams of people around us and keep providing progressive spaces for progressive people.*

- Mahesh Kabra



33LE has been conceptualised and materialised by the most adept minds in the real estate industry.

With thoughts of meticulous perfection & longevity, it is empowered by technical expertise of :

ARCHITECT

Uneven

STRUCTURAL CONSULTANT

Aashutosh Desai

QUALITY CONTROL

Technocrat Engineering Lab  
& Vishwakarma Consultants

MEP CONSULTANTS

Sheth Rechno Consultants Pvt Ltd

GREEN BUILDING CONSULTANT

Ankoor Sanghvi

CONSTRUCTION PARTNERS

NCCCL

3D ILLUSTRATIONS

Param Interactive



**KABEL BUILDCON**

Creating Progressive Addresses  
for those who prefer living in a  
Progressive State of Mind,  
Worldwide !!

**33LE** is a Landmark Project of Gujarat by **Kabel Buildcon Solutions Pvt Ltd**, a company built grassroots up with a divine purpose of bringing a WOWsome life to all by creating progressive and value-for-money homes.

**33LE** is **Kabel Buildcon's** flagship project, which has become a trendsetter in terms of introducing many a '1<sup>st</sup>' for the Real Estate industry, inspiring them to reach new milestones and expanding new horizons with its Futuristic Design, Progressive Construction Practices and Facilities that evoke a feeling of Opulence.



Loved & Evolved Homes for  
Loved & Evolved Families

RERA Registration Number:  
PR/GJ/VADODARA/VADODARA/Others/RAA00093/EX2/030120

**KABEL BUILDCON**



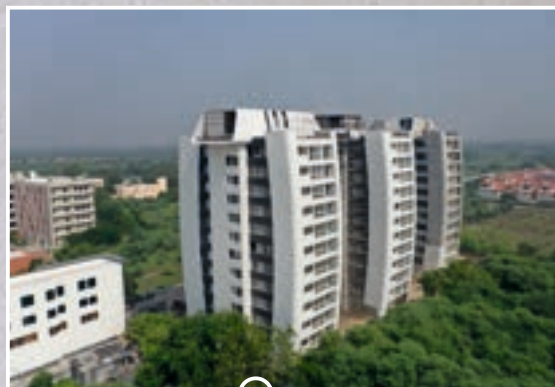
2014

2014

2015

2016

2017



2018

2019

2020

2020



Every architectural marvel known to man has been first built in the Imagination of Great Minds and then meticulously executed by skilled hands. This calls for the choicest of construction material and innovative practices that help realise this vision to reality.

33LE too has been meticulously designed by the most gifted minds of the real estate industry and mindfully executed by adept professionals. Only the best names in each category of construction material, progressive building practices and finishing works were sourced from all over the globe.

Switches and  
Switchgear



hansgrohe

sanitary fixtures

Water Pressure Pumps



Flush Tanks and Cisterns



Parking Systems



Wood Flooring



Swimming Pool Equipment



Water Pipes and  
Drainage Accessories



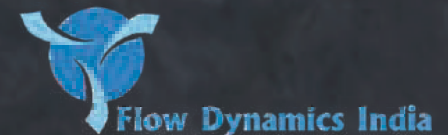
Sanitaryware

TOTO

Doors and  
Windows



Sewage Treatment Plant



Flooring



Wires and Cables



Elevator Systems



Wooden Deck

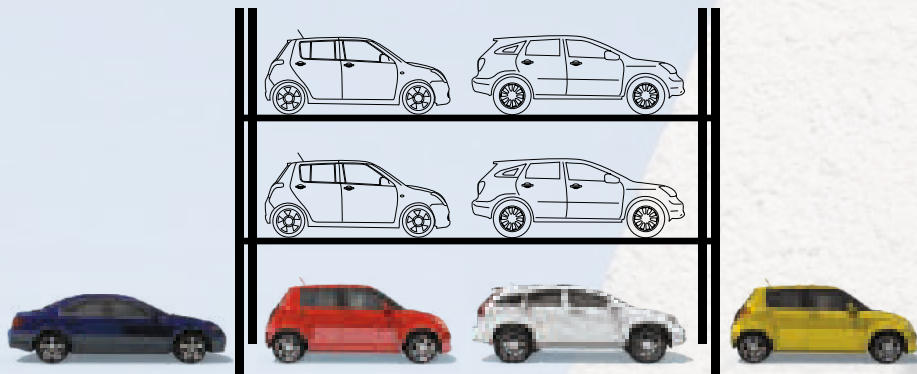


Formwork and  
Scaffolding Solutions





Each Flat has facilities to invest in a mechanised smart parking system in the basement for increased functionality and progressive living. This car parking system enhances a smart and secure way of parking while promoting better allocation of parking space for all.



33LE is Pre-Rated Green Building Certified Project by IGBC in 'Gold' Category for its top-of-the-line Eco-Friendly planning with Onsite Rainwater Harvesting, Sewage Treatment Plant, Water Softening Plant and Pressure Boosting Bump and every other meticulous practice that ensures progressive utilization of energy and water resources. Our Sewage Treatment Plant is empowered with an added Microfilter that enhances quality of treated water making it colourless and odourless.





A Multi-Tier security system with Hi-tech Electronic and Human Surveillance system, CCTV systems, smart fire-safety regulations compliancy, provision for integrated door-phones complete with access control which is customised for home-owners to ensure that you and your loved ones feel secure and at peace in your property.

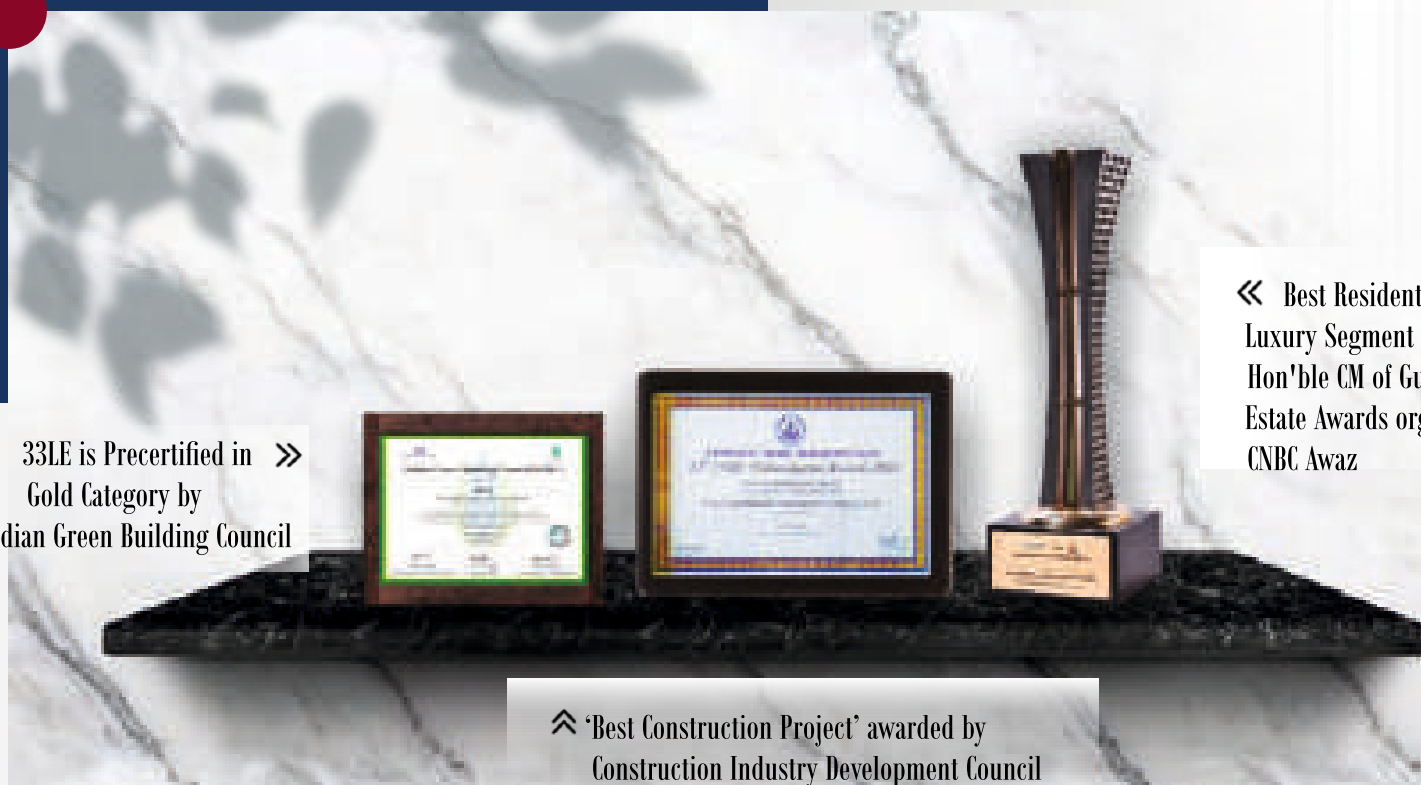


The structure of 33LE has been built using only futuristic construction practices for higher durability and minimised maintenance, which was a 'first' in Vadodara like using Post-Tensioning Pre-Stressing and lightweight 'Peri-Formwork' systems from Germany, making 33LE one of the most structurally-secure and durable homes one can live in.

# Achievements



33LE is Precertified in >>  
Gold Category by  
Indian Green Building Council



<< Best Residential Project  
Luxury Segment awarded by  
Hon'ble CM of Gujarat in Real  
Estate Awards organised by  
CNBC Awaz

<< 'Best Construction Project' awarded by  
Construction Industry Development Council



Best Residential Project Luxury Segment award ⤴  
 being received by our Chief Hon'ble Smt. Vidhi Kabra  
 on behalf of Kabel Buildcon by Hon'ble CM of Gujarat  
 in Gujarat Real Estate Awards organised by CNBC Awaz



A massive Infinity Pool on the terrace which is accessible to you at any given time of the day, complete with a sun-basking deck, sunset and sunrise points, yoga terrace area, decorated with lush greenery and tall palms giving you a feeling of complete affluence and peace. Each side of the deck has facilities for steam, shower and restroom, individually for men and women.

Imagined 3D View



Actual Image of Pool

ACTUAL SAMPLE FLAT IMAGE



Each Floor is a blissful 'smartment' with one 4BHK flat on the entire floor. As you enter into your floor from the Lift Lobby, you open gates to your own personal Divine Abode for you and your Loved Ones.



LOVED & EVOLVED

Morning Walks  
of Divine Serenity

Lush Greens  
Fresh Air

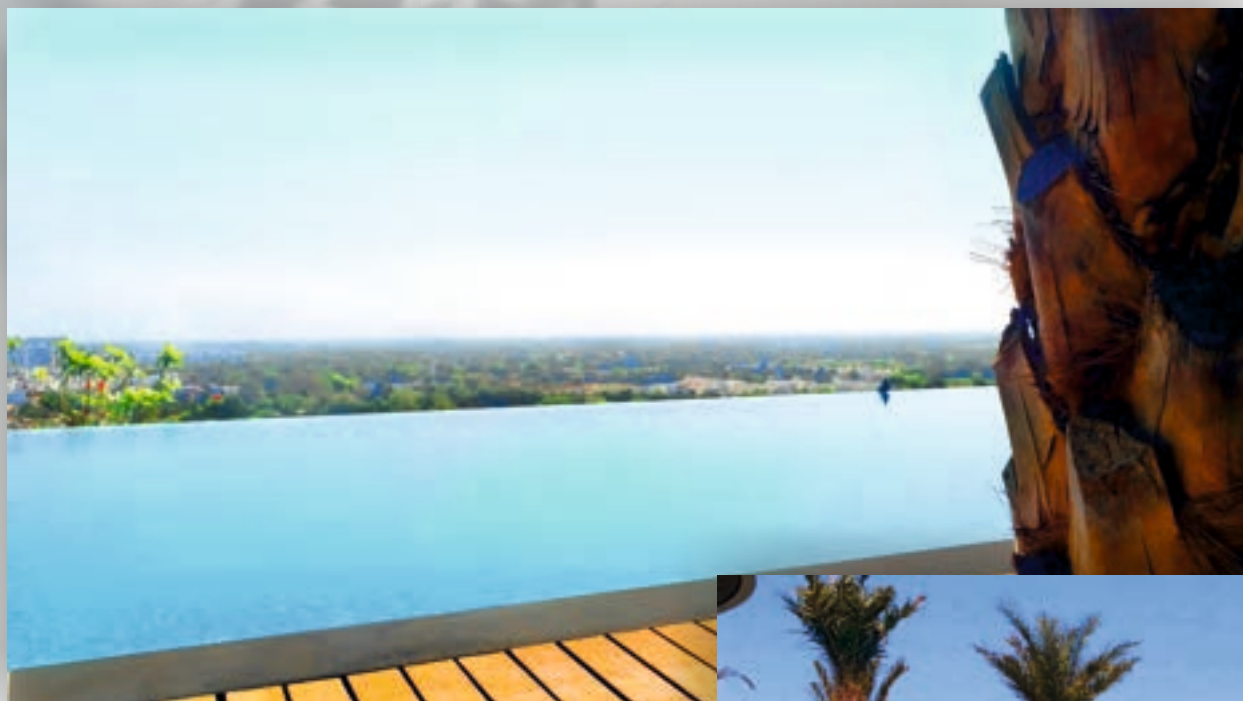




A Generous expanse of 60feet between each tower and breather of Green space all around provides you and your Loved ones fresh air circulation, privacy, Heavenly Tranquillity and Peaceful Serenity.

The Outdoors have been lovingly designed as One Living Organism. Ledges, meticulously polished stone benches, lush green patches and sun kissed canopies become grounds of bonding over evening-tea and morning walks.





Get soaked  
in Affluence

Aqua Blues  
Sheer Bliss

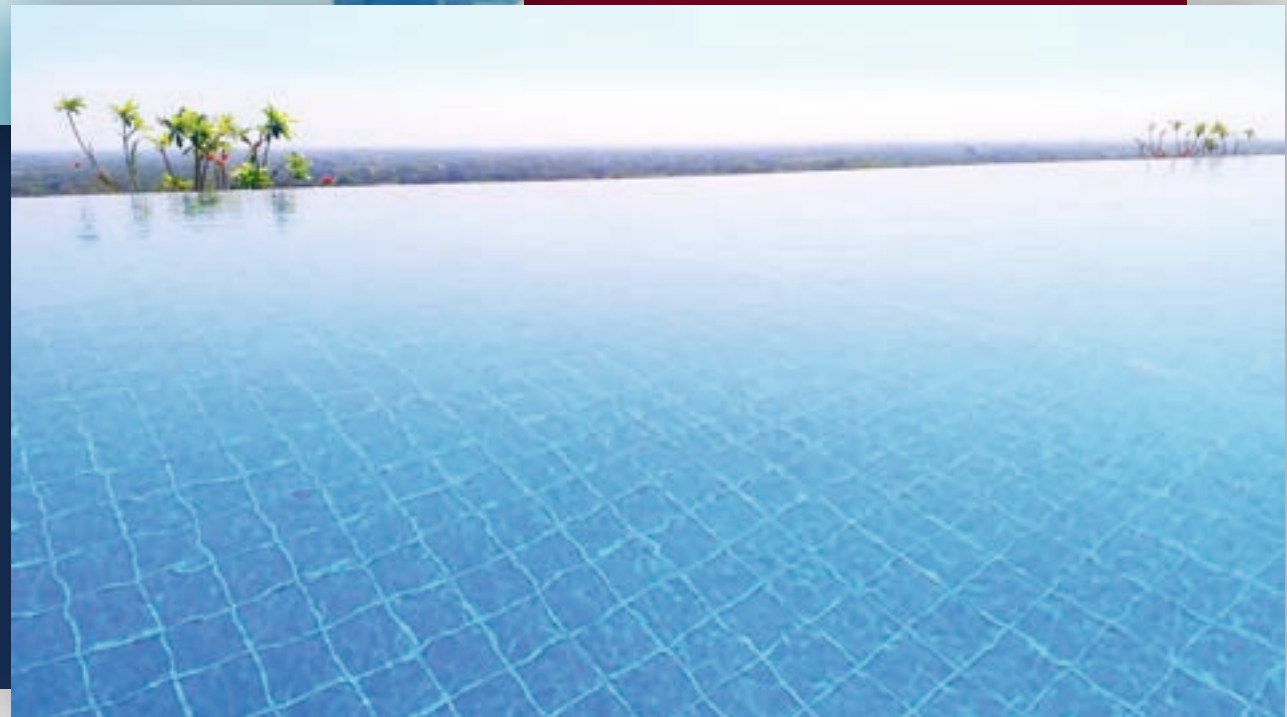




33LE feels blessed to be the 1<sup>st</sup> completed project with a massive infinity pool on terrace (12<sup>th</sup> level). Housing a massive volume of water. Soak into complete opulence as you splash into the aqua blue waters with an infinitive view overlooking a 360-degree expanse of the entire city for miles!

Complying with norms at every stage like safe pool depth, turnover cycle, filtration velocity, hydraulic design, low power consumption and silent equipment.

Feel absolutely rejuvenated as it is 100% disinfected by Chlorine, Ozone and UV which continuously remove foreign organisms, colour and odour, while maintaining the natural divine quality of water making you feel Fresh and Pure.





From Me-Time  
to Family Time

Relax  
Rejuvenate  
Celebrate





From a relaxing day at the Spa to a memorable day with friends and family in celebrations, we at 33LE understand that your Life should have abundance of moments that you can savour. Facilities like these have been thoughtfully planned for you and your loved ones to invest in cherishable moments.

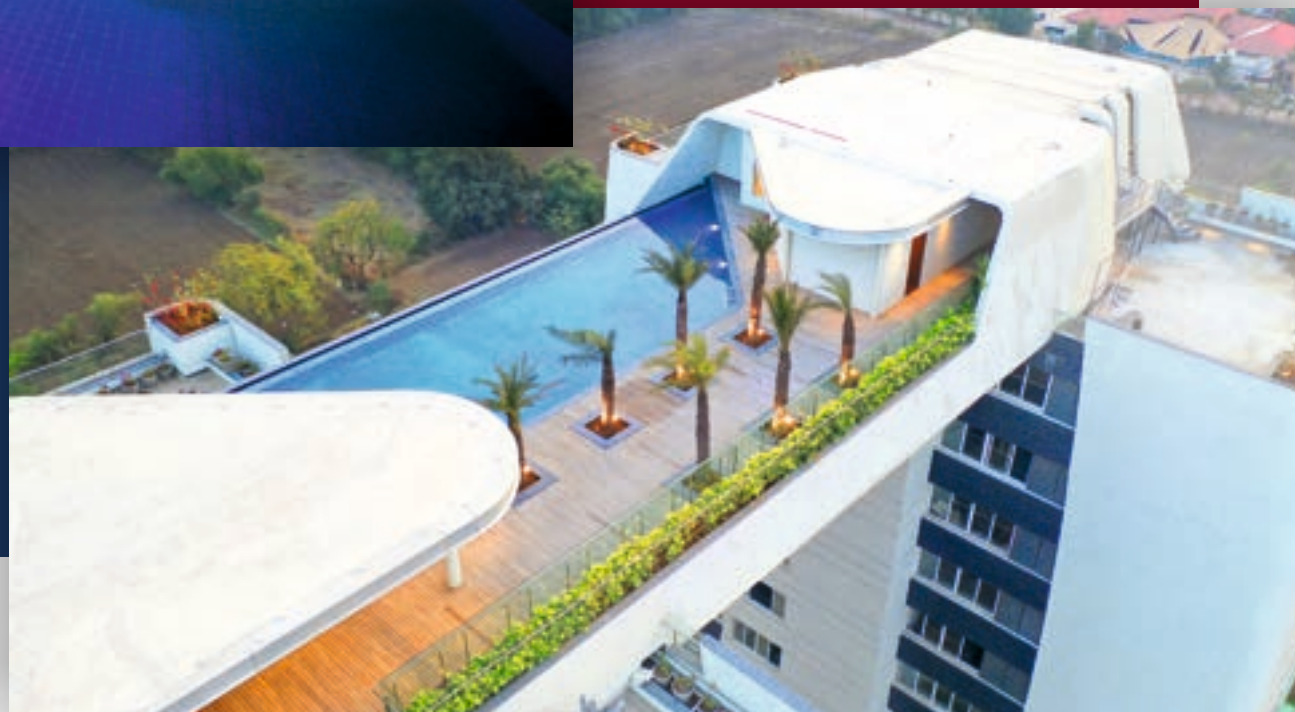
- Spa Room
- Steam Room
- Multipurpose Hall(s)
- Mini Theatre
- Luxurious Guest Rooms on request
- Pantry for your Party on request
- Separate rest room for Drivers





Celebrate in  
the Clouds

Sheer Affluence  
Top of the World





The Magnanimous Terrace of 33LE has been designed skilfully and made with Love keeping in mind the moments you would like to celebrate with your Loved Ones.

A Sprawling Deck of wood for your evening strolls, enjoying the cool gusts of wind or gazing at the 360degree view of the city from the many terrace-in-terrace of 33LE, with Sunset-Sunrise Points and Yoga Terrace, while you celebrate your most savoury moments with Friends and Family.



Choicest of  
Sport Activities

Harmony of Body,  
Mind & Soul





Train your Body & Mind everyday with the choicest of Indoor /Outdoor Sport Activities that we have spread across for you in the three towers. Be it exercising your muscles in the gym and increasing your agility in the squash court, we have it all just for your fitness.

- Fully equipped Gymnasium with Steam and Shower
- Indoor Games Room
- Indoor Squash Court
- Multi-Purpose Court
- Jogging and Cycling Track
- Special Play Area for Kids and Toddlers



**Typical Apartment**  
3800 sq.ft to 4500 sq.ft



*this is an indicative plan, actual plan per floor may differ.*

## Typical Floor Plan



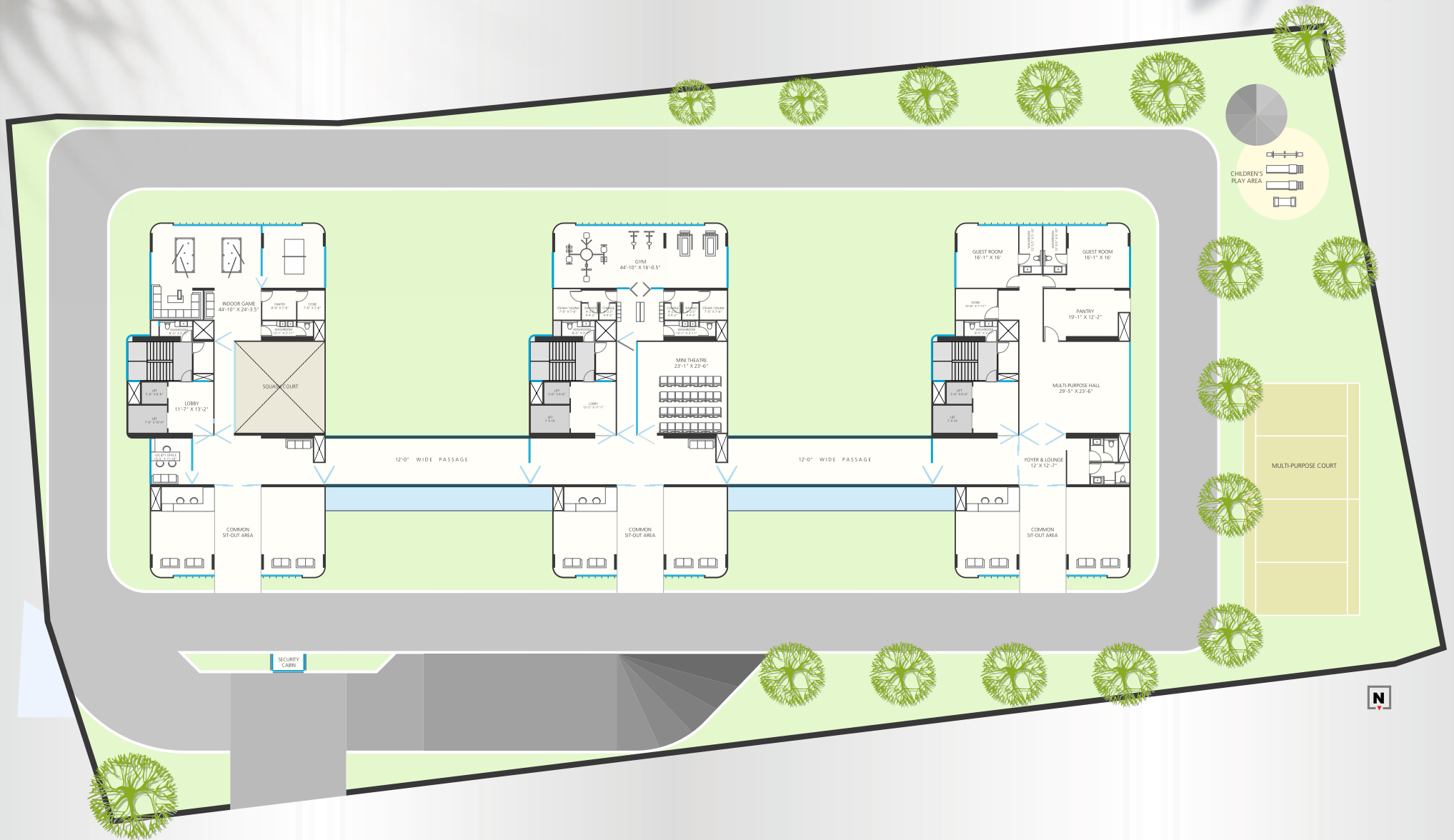
this is an indicative plan, actual plan per floor may differ.



## The Amenities Map

- a indoor games
- b squash court
- c estate manager office
- d lounge
- e gym
- f spa room
- g mini theatre
- h guest rooms
- i pantry
- j multi-purpose hall

## Ground Floor Plan

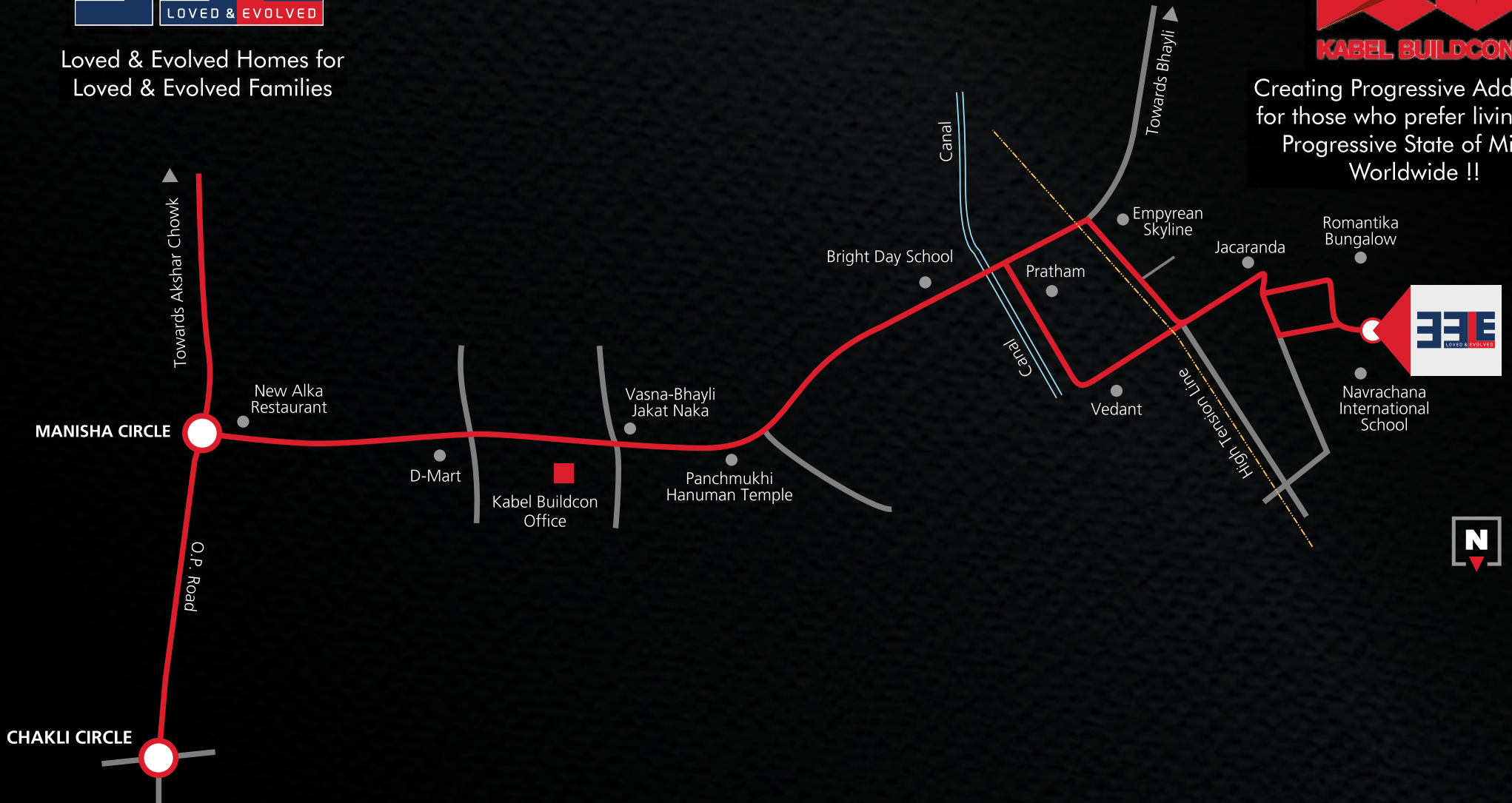




Loved & Evolved Homes for  
Loved & Evolved Families



Creating Progressive Addresses  
for those who prefer living in a  
Progressive State of Mind,  
Worldwide !!



**33LE Site** Nr. Navrachna University | Vasna Bhayli Road | Vadodara - 391410 | India  
**Head Office** 1, Shivanshu Bungalows | Arjun Heights | Vasna Road | Vadodara-390015 |